

## \$580,000 - 1344 Potter Greens Drive, Edmonton

MLS® #E4432063

**\$580,000**

4 Bedroom, 3.00 Bathroom, 1,814 sqft

Condo / Townhouse on 0.00 Acres

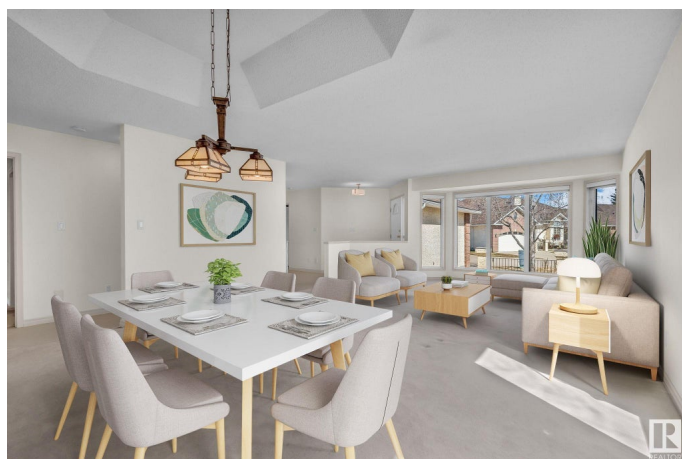
Potter Greens, Edmonton, AB

Adult living at its best! This stunning 1800+ sq ft bungalow backs onto Lewis Estates Golf Course and offers everything youâ€™ve been looking for. The open-concept main floor is filled with natural light and features two living rooms, a formal dining room, and a bright breakfast nook overlooking beautiful views. Relax and unwind on the large deck â€“ the perfect place for morning coffee or evening sunsets. The spacious primary suite offers a walk-in closet and ensuite, plus thereâ€™s a versatile second bedroom or den. The fully finished basement with 9 ft ceilings includes two additional bedrooms, a large rec room, and plenty of storage. Complete with a double attached garage, this home combines comfort, style, and unbeatable location! \*\*This home has been virtually staged\*\*

Built in 1992

### Essential Information

MLS® #	E4432063
Price	\$580,000
Bedrooms	4
Bathrooms	3.00
Full Baths	3
Square Footage	1,814
Acres	0.00
Year Built	1992



Type	Condo / Townhouse
Sub-Type	Half Duplex
Style	Bungalow
Status	Active

### Community Information

Address	1344 Potter Greens Drive
Area	Edmonton
Subdivision	Potter Greens
City	Edmonton
County	ALBERTA
Province	AB
Postal Code	T5T 6A3

### Amenities

Amenities	Deck, 9 ft. Basement Ceiling
Parking Spaces	4
Parking	Double Garage Attached

### Interior

Interior Features	ensuite bathroom
Appliances	Dishwasher-Built-In, Dryer, Freezer, Garage Control, Garage Opener, Microwave Hood Fan, Refrigerator, Stove-Electric, Washer, Window Coverings, See Remarks, Refrigerators-Two
Heating	Forced Air-1, Natural Gas
Fireplace	Yes
Fireplaces	Mantel
Stories	2
Has Basement	Yes
Basement	Full, Finished

### Exterior

Exterior	Wood, Brick, Vinyl
Exterior Features	Backs Onto Park/Trees, Golf Nearby, Landscaped, Playground Nearby, Shopping Nearby
Roof	Asphalt Shingles
Construction	Wood, Brick, Vinyl
Foundation	Concrete Perimeter

### Additional Information

Date Listed	April 22nd, 2025
Days on Market	8
Zoning	Zone 58
Condo Fee	\$564

DATA IS DEEMED RELIABLE BUT IS NOT GUARANTEED ACCURATE BY THE REALTORS® ASSOCIATION OF EDMONTON. COPYRIGHT 2025 BY THE REALTORS® ASSOCIATION OF EDMONTON. ALL RIGHTS RESERVED. Trademarks are owned or controlled by the Canadian Real Estate Association (CREA) and identify real estate professionals who are members of CREA (REALTOR®, REALTORS®) and/or the quality of services they provide (MLS®, Multiple Listing Service®)

Listing information last updated on April 29th, 2025 at 9:47pm MDT