

\$724,900 - 337 Still Creek Crescent, Sherwood Park

MLS® #E4431689

\$724,900

4 Bedroom, 3.50 Bathroom, 2,441 sqft

Single Family on 0.00 Acres

Summerwood, Sherwood Park, AB

Hello GORGEOUS! This fully finished family home is the ONE you've been waiting for, featuring AC, 4 bedrooms & 3.5 baths tucked onto a quiet street in the family friendly community of Summerwood. A bright & spacious entry invites you in to find 9' ceilings & hardwood flooring throughout the main level. The chef's kitchen offers plenty of modern 2 toned cabinets, S/S appliances, including gas stove, walk through pantry & quartz island that over looks the dining & living room with cozy fireplace. Complementing the functional layout is a 1/2 bath & mud room. Moving upstairs you will LOVE the king sized primary suite with 2 WI closets & luxurious ensuite. 2 more bdrms are both generous in size, 4pc bath, media room & bonus room - tons of room for the whole family! The basement is fully finished with vinyl plank flooring through the family sized rec room, 4th bdrm, flex space & 4pc bath, plus room for storage. ENJOY the fenced & landscaped SOUTH yard with tiered deck. Steps away from parks, trails & schools!

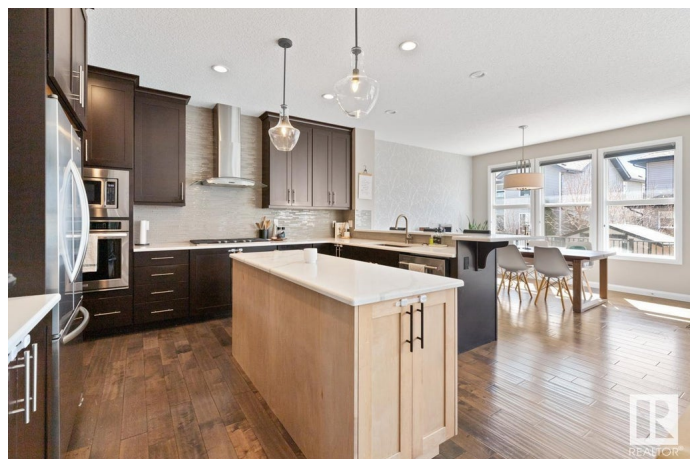
Built in 2013

Essential Information

MLS® # E4431689

Price \$724,900

Bedrooms 4



| | |
|----------------|------------------------|
| Bathrooms | 3.50 |
| Full Baths | 3 |
| Half Baths | 1 |
| Square Footage | 2,441 |
| Acres | 0.00 |
| Year Built | 2013 |
| Type | Single Family |
| Sub-Type | Detached Single Family |
| Style | 2 Storey |
| Status | Active |

Community Information

| | |
|-------------|--------------------------|
| Address | 337 Still Creek Crescent |
| Area | Sherwood Park |
| Subdivision | Summerwood |
| City | Sherwood Park |
| County | ALBERTA |
| Province | AB |
| Postal Code | T8H 0S7 |

Amenities

| | |
|-----------|--|
| Amenities | Air Conditioner, Ceiling 9 ft., Deck, Vinyl Windows, See Remarks |
| Parking | Double Garage Attached, Insulated |

Interior

| | |
|-------------------|---|
| Interior Features | ensuite bathroom |
| Appliances | Air Conditioning-Central, Dishwasher-Built-In, Dryer, Freezer, Hood Fan, Oven-Microwave, Refrigerator, Stove-Gas, Washer, Window Coverings, Wine/Beverage Cooler, TV Wall Mount |
| Heating | Forced Air-1, Natural Gas |
| Fireplace | Yes |
| Fireplaces | Tile Surround |
| Stories | 3 |
| Has Basement | Yes |
| Basement | Full, Finished |

Exterior

| | |
|-------------------|---|
| Exterior | Wood, Stone, Vinyl |
| Exterior Features | Fenced, Landscaped, Playground Nearby, Public Transportation, |

Schools, Shopping Nearby, See Remarks

| | |
|--------------|--------------------|
| Roof | Asphalt Shingles |
| Construction | Wood, Stone, Vinyl |
| Foundation | Concrete Perimeter |

School Information

| | |
|------------|------------------|
| Elementary | DAVIDSON CREEK |
| Middle | SHERWOOD HEIGHTS |
| High | SALISBURY COMP |

Additional Information

| | |
|----------------|------------------|
| Date Listed | April 18th, 2025 |
| Days on Market | 2 |
| Zoning | Zone 25 |

DATA IS DEEMED RELIABLE BUT IS NOT GUARANTEED ACCURATE BY THE REALTORS® ASSOCIATION OF EDMONTON. COPYRIGHT 2025 BY THE REALTORS® ASSOCIATION OF EDMONTON. ALL RIGHTS RESERVED. Trademarks are owned or controlled by the Canadian Real Estate Association (CREA) and identify real estate professionals who are members of CREA (REALTOR®, REALTORS®) and/or the quality of services they provide (MLS®, Multiple Listing Service®)

Listing information last updated on April 19th, 2025 at 9:31pm MDT