

Courtesy Of Timothy S Baker Of RE/MAX Edge Realty

## \$499,900 - 247 Savoy Crescent, Sherwood Park

MLS® #E4431686

**\$499,900**

3 Bedroom, 3.00 Bathroom, 1,841 sqft

Single Family on 0.00 Acres

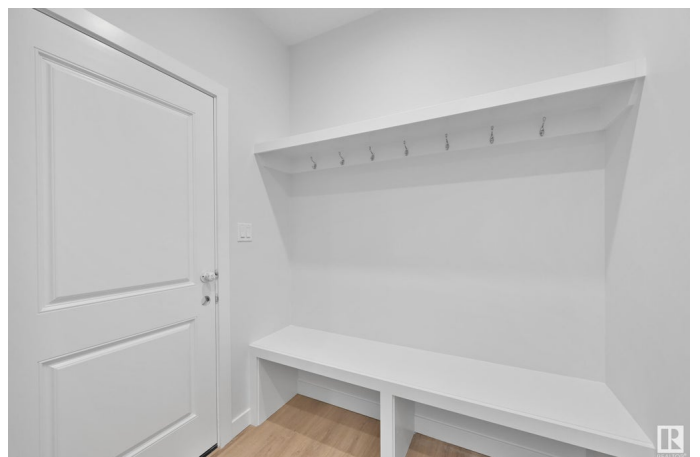
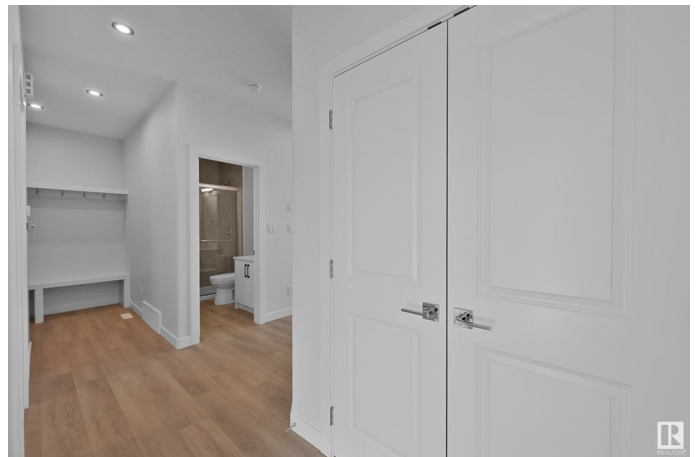
Summerwood, Sherwood Park, AB

Welcome to this stunning new build duplex in Sherwood Park, where contemporary design meets comfort and functionality! This home features 3 bedrooms, 3 bathrooms, and over 1841 sqft of stylish, open-concept living space. Enjoy a chef-inspired kitchen with a walk-in pantry, and an ample amount of cabinet and counter space. The main floor is bright and airy, with many windows, high ceilings and a cozy living space perfect for family time or entertaining guests. The main floor also features a versatile den as well as a 3-piece bathroom. Upstairs, the primary suite is a private retreat, complete with a walk-in closet and sleek ensuite. In addition to the primary you will find 2 more bedrooms as well as another 4-piece bathroom. Located close to parks, schools, and essential amenities, this is the perfect opportunity to get into a brand new home in a growing, family-friendly community.

Built in 2025

### Essential Information

|                |           |
|----------------|-----------|
| MLS® #         | E4431686  |
| Price          | \$499,900 |
| Bedrooms       | 3         |
| Bathrooms      | 3.00      |
| Full Baths     | 3         |
| Square Footage | 1,841     |



|            |               |
|------------|---------------|
| Acres      | 0.00          |
| Year Built | 2025          |
| Type       | Single Family |
| Sub-Type   | Half Duplex   |
| Style      | 2 Storey      |
| Status     | Active        |

### **Community Information**

|             |                    |
|-------------|--------------------|
| Address     | 247 Savoy Crescent |
| Area        | Sherwood Park      |
| Subdivision | Summerwood         |
| City        | Sherwood Park      |
| County      | ALBERTA            |
| Province    | AB                 |
| Postal Code | T8H 2Y4            |

### **Amenities**

|                |  |
|----------------|--|
| Amenities      | Ceiling 9 ft., See Remarks, 9 ft. Basement Ceiling |
| Parking Spaces | 4  |
| Parking        | Double Garage Attached                             |

### **Interior**

|                   |                               |
|-------------------|-------------------------------|
| Interior Features | ensuite bathroom              |
| Appliances        | Garage Control, Garage Opener |
| Heating           | Forced Air-1, Natural Gas     |
| Fireplace         | Yes                           |
| Fireplaces        | Insert                        |
| Stories           | 2                             |
| Has Basement      | Yes                           |
| Basement          | Full, Unfinished              |

### **Exterior**

|                   |  |
|-------------------|--|
| Exterior          | Wood, Stone, Vinyl   |
| Exterior Features | Public Transportation, Schools, Shopping Nearby, See Remarks |
| Roof              | Asphalt Shingles   |
| Construction      | Wood, Stone, Vinyl   |
| Foundation        | Concrete Perimeter   |

### **School Information**

|            |                          |
|------------|--------------------------|
| Elementary | Brentwood Elementary     |
| Middle     | Clover Bar Junior High   |
| High       | Bev Facey Community High |

### **Additional Information**

Date Listed      April 18th, 2025

Days on Market    2

Zoning             Zone 25

DATA IS DEEMED RELIABLE BUT IS NOT GUARANTEED ACCURATE BY THE REALTORS® ASSOCIATION OF EDMONTON. COPYRIGHT 2025 BY THE REALTORS® ASSOCIATION OF EDMONTON. ALL RIGHTS RESERVED. Trademarks are owned or controlled by the Canadian Real Estate Association (CREA) and identify real estate professionals who are members of CREA (REALTOR®, REALTORS®) and/or the quality of services they provide (MLS®, Multiple Listing Service®)

Listing information last updated on April 19th, 2025 at 10:02pm MDT