

\$425,000 - 54115 Rge Rd 275, Rural Parkland County

MLS® #E4431323

\$425,000

0 Bedroom, 0.00 Bathroom,
Rural on 7.86 Acres

None, Rural Parkland County, AB

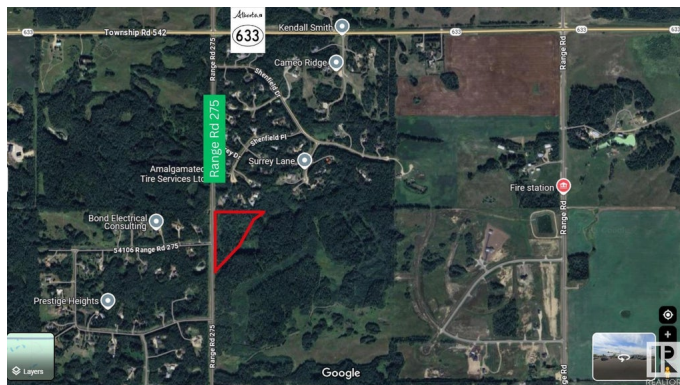
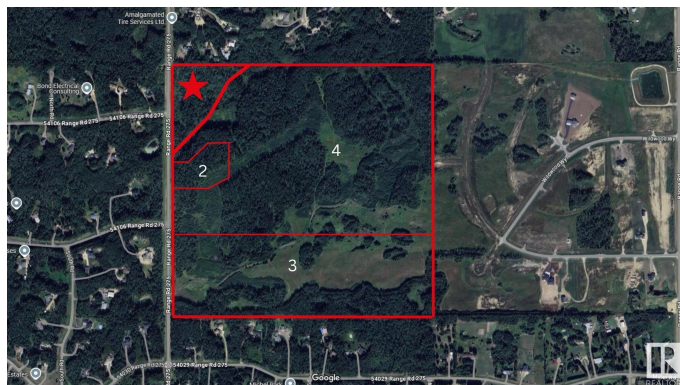
Lot 1 - Premium corner lot in a private, treed setting, outside of subdivision. Located at the northwest corner of City View Estates, this 7.86+/- acre parcel offers mature trees, gentle rolling land, and paved access off Range Road 275. Zoned RC - Country Residential, this lot is ideal for building a custom home with room for outbuildings, hobby gardening, and more--all within a quiet, rural community just 10 minutes from Spruce Grove, less than 30 minutes from Edmonton, and only 20 minutes from St. Albert, and Acheson. With power and gas at the property line.

Essential Information

MLS® #	E4431323
Price	\$425,000
Bathrooms	0.00
Acres	7.86
Type	Rural
Sub-Type	Vacant Lot/Land
Status	Active

Community Information

Address	54115 Rge Rd 275
Area	Rural Parkland County
Subdivision	None
City	Rural Parkland County



County	ALBERTA
Province	AB
Postal Code	T7X 3S4

Exterior

Exterior Features See Remarks

Additional Information

Date Listed	April 17th, 2025
Days on Market	2
Zoning	Zone 90

DATA IS DEEMED RELIABLE BUT IS NOT GUARANTEED ACCURATE BY THE REALTORS® ASSOCIATION OF EDMONTON. COPYRIGHT 2025 BY THE REALTORS® ASSOCIATION OF EDMONTON. ALL RIGHTS RESERVED.Trademarks are owned or controlled by the Canadian Real Estate Association (CREA) and identify real estate professionals who are members of CREA (REALTOR®, REALTORS®) and/or the quality of services they provide (MLS®, Multiple Listing Service®)

Listing information last updated on April 19th, 2025 at 4:02pm MDT