

\$209,800 - 212 Warwick Road, Edmonton

MLS® #E4430444

\$209,800

3 Bedroom, 1.50 Bathroom, 1,292 sqft
Condo / Townhouse on 0.00 Acres

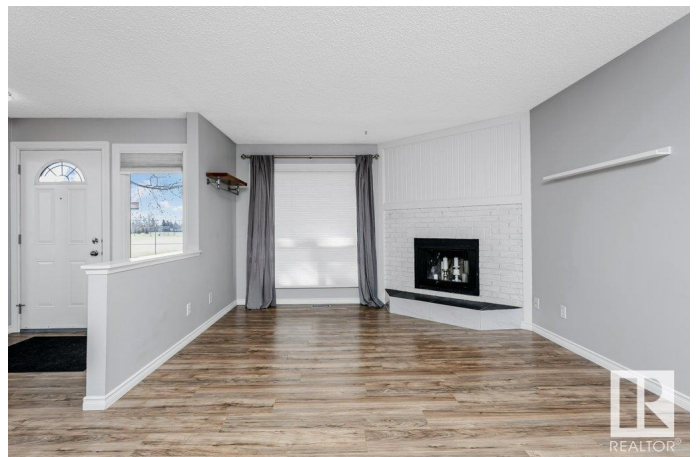
Dunluce, Edmonton, AB

Charming 1250+ SQFT 2-storey Townhouse in the Dunluce neighborhood with 3 bedrooms, updated 1.5 baths, and a partially finished basement. This home features a cozy living room with a wood-burning fireplace, kitchen with Stainless Steel appliances, Newer Cabinets and Countertops, Farmhouse Sink, and a dining area. Upstairs, you'll find 3 bedrooms and a 4-piece bath, accessible from the Primary Suite. The basement includes a recreation room, laundry, and roughed-in plumbing for bathroom. Outside, a fenced yard with raised garden beds and a patio offers a perfect spot for summer enjoyment. Additional upgrades like laminate flooring, paint and baseboards make this home move-in ready. Conveniently located near parks, schools, shops, and public transportation, this property is ideal for first-time buyers or investors. Don't miss out on this gem!

Built in 1979

Essential Information

MLS® #	E4430444
Price	\$209,800
Bedrooms	3
Bathrooms	1.50
Full Baths	1
Half Baths	1



Square Footage	1,292
Acres	0.00
Year Built	1979
Type	Condo / Townhouse
Sub-Type	Townhouse
Style	2 Storey
Status	Active

Community Information

Address	212 Warwick Road
Area	Edmonton
Subdivision	Dunluce
City	Edmonton
County	ALBERTA
Province	AB
Postal Code	T5X 4P8

Amenities

Amenities	Patio
Parking	Stall

Interior

Appliances	Dishwasher-Built-In, Dryer, Oven-Microwave, Refrigerator, Stove-Electric, Washer, Window Coverings
Heating	Forced Air-1, Natural Gas
Fireplace	Yes
Fireplaces	Corner
Stories	2
Has Basement	Yes
Basement	Full, Partially Finished

Exterior

Exterior	Wood
Exterior Features	Back Lane, Fenced, Landscaped, Playground Nearby, Public Transportation, Schools
Roof	Asphalt Shingles
Construction	Wood
Foundation	Concrete Perimeter

School Information

Elementary	Dunluce School
Middle	Rosslyn School
High	Queen Elizabeth School

Additional Information

Date Listed	April 11th, 2025
Days on Market	8
Zoning	Zone 27
Condo Fee	\$409

DATA IS DEEMED RELIABLE BUT IS NOT GUARANTEED ACCURATE BY THE REALTORS® ASSOCIATION OF EDMONTON. COPYRIGHT 2025 BY THE REALTORS® ASSOCIATION OF EDMONTON. ALL RIGHTS RESERVED. Trademarks are owned or controlled by the Canadian Real Estate Association (CREA) and identify real estate professionals who are members of CREA (REALTOR®, REALTORS®) and/or the quality of services they provide (MLS®, Multiple Listing Service®)

Listing information last updated on April 19th, 2025 at 6:17am MDT