

Courtesy Of Jeffrey LeHoux and Cindy M Dooley Of Exp Realty

## **\$84,900 - 105 10811 115 Street, Edmonton**

MLS® #E4429864

**\$84,900**

1 Bedroom, 1.00 Bathroom, 529 sqft  
Condo / Townhouse on 0.00 Acres

Queen Mary Park, Edmonton, AB

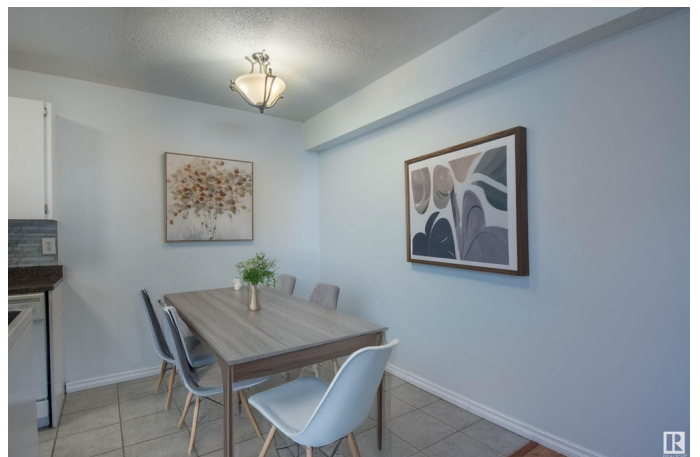
Welcome to your new sanctuary in the heart of Edmonton's vibrant Queen Mary Park community! This delightful condo offers an inviting blend of comfort and convenience, perfect for first-time buyers or savvy investors. Close to downtown, NAIT, bus route, and the revived Brewery District with tons of shopping and amenities. (new LRT coming soon) Bright, open-concept living space bathed in natural light from expansive east-facing windows. The kitchen shines with a newer stove and sleek modern faucet, refrigerator, and built-in dishwasher for all your culinary needs. The spacious bedroom features a generous closet and ample room for a king-size bed! Durable laminate and ceramic tile flooring extend throughout, combining style with easy maintenance. Updated lighting fixtures throughout the unit create a warm and welcoming ambiance. Conveniently common laundry is right outside your door. Quiet unit at the end of the hall in a well-managed, quiet complex. Low condo fees include water/sewer/heat.

Built in 1968

### **Essential Information**

MLS® # E4429864

Price \$84,900



Bedrooms	1
Bathrooms	1.00
Full Baths	1
Square Footage	529
Acres	0.00
Year Built	1968
Type	Condo / Townhouse
Sub-Type	Lowrise Apartment
Style	Single Level Apartment
Status	Active

### **Community Information**

Address	105 10811 115 Street
Area	Edmonton
Subdivision	Queen Mary Park
City	Edmonton
County	ALBERTA
Province	AB
Postal Code	T5L 5H5

### **Amenities**

Amenities	Detectors Smoke, No Animal Home, No Smoking Home, Vinyl Windows
Parking	Stall

### **Interior**

Appliances	Dishwasher-Built-In, Fan-Ceiling, Hood Fan, Refrigerator, Stove-Electric, Window Coverings
Heating	Baseboard, Natural Gas
# of Stories	3
Stories	1
Has Basement	Yes
Basement	None, No Basement

### **Exterior**

Exterior	Wood, Brick
Exterior Features	Back Lane, Corner Lot, Landscaped, Level Land, Playground Nearby, Public Transportation, Schools, Shopping Nearby, See Remarks, Partially Fenced
Roof	Tar & Gravel

Construction	Wood, Brick
Foundation	Concrete Perimeter

### **Additional Information**

Date Listed	April 9th, 2025
Days on Market	4
Zoning	Zone 08
Condo Fee	\$343

DATA IS DEEMED RELIABLE BUT IS NOT GUARANTEED ACCURATE BY THE REALTORS® ASSOCIATION OF EDMONTON. COPYRIGHT 2025 BY THE REALTORS® ASSOCIATION OF EDMONTON. ALL RIGHTS RESERVED. Trademarks are owned or controlled by the Canadian Real Estate Association (CREA) and identify real estate professionals who are members of CREA (REALTOR®, REALTORS®) and/or the quality of services they provide (MLS®, Multiple Listing Service®)

Listing information last updated on April 12th, 2025 at 11:47pm MDT