

\$330,000 - 5 2922 Maple Way, Edmonton

MLS® #E4429064

\$330,000

3 Bedroom, 2.50 Bathroom, 1,536 sqft
Condo / Townhouse on 0.00 Acres

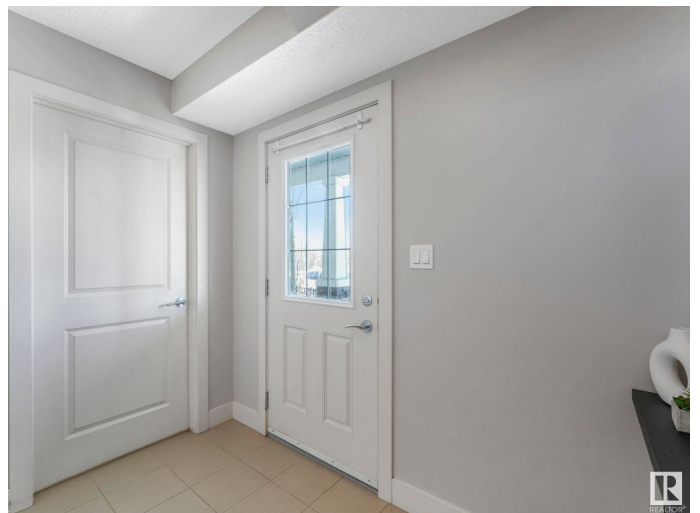
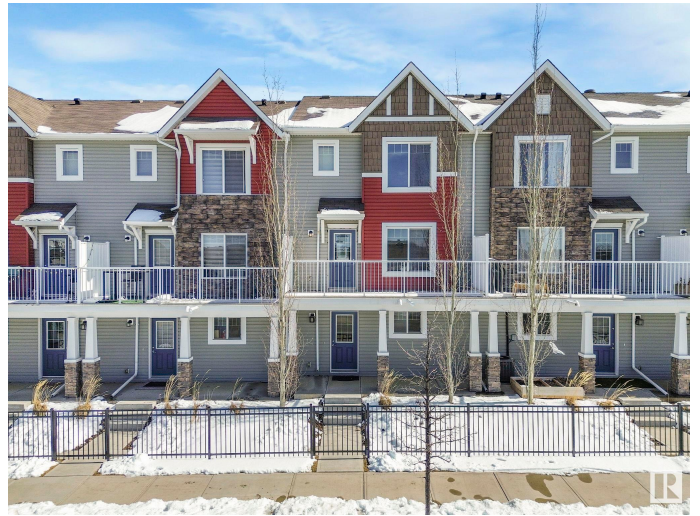
Maple Crest, Edmonton, AB

FRESHLY PAINTED, PROFESSIONALLY CLEANED & PRE-INSPECTED—this luxurious, move-in ready 2-storey townhome in Maple Crest is ready to impress. Step inside to find beautiful hardwood floors, stainless steel Whirlpool appliances, and stunning lake views from both the living room balcony and the primary suite. The open-concept kitchen features a counter-height island, spacious pantry, and an abundance of natural light, offering both functionality and style. This level also includes a laundry room, half bathroom, and a bright, generous living room that opens to your private balcony. Upstairs offers a large primary suite with walk-in closet & full ensuite, plus two more bedrooms & a full bath with linen closet. The walkout basement includes a roomy entryway & double car garage for secure parking. Ideally located with street parking out front & visitor parking directly behind. Close to trails, lakes, parks, transit, schools & major routes including Whitemud Drive & the Anthony Henday. A true gem in Maple Crest!

Built in 2015

Essential Information

MLS® #	E4429064
Price	\$330,000



Bedrooms	3
Bathrooms	2.50
Full Baths	2
Half Baths	1
Square Footage	1,536
Acres	0.00
Year Built	2015
Type	Condo / Townhouse
Sub-Type	Townhouse
Style	2 Storey
Status	Active

Community Information

Address	5 2922 Maple Way
Area	Edmonton
Subdivision	Maple Crest
City	Edmonton
County	ALBERTA
Province	AB
Postal Code	T6T 1A5

Amenities

Amenities	Off Street Parking, On Street Parking, Ceiling 9 ft., Detectors Smoke, No Animal Home, Parking-Extra, Parking-Visitor, Secured Parking, Vinyl Windows, See Remarks, Natural Gas BBQ Hookup
Parking Spaces	2
Parking	Double Garage Attached

Interior

Interior Features	ensuite bathroom
Appliances	Dishwasher-Built-In, Microwave Hood Fan, Refrigerator, Stacked Washer/Dryer, Stove-Electric
Heating	Forced Air-1, Natural Gas
Stories	3
Has Basement	Yes
Basement	Full, Finished

Exterior

Exterior	Wood, Stone, Vinyl
----------	--------------------

Exterior Features	Back Lane, Fenced, Landscaped, Level Land, Schools, Shopping Nearby, View Lake, See Remarks
Roof	Asphalt Shingles
Construction	Wood, Stone, Vinyl
Foundation	Concrete Perimeter

Additional Information

Date Listed	April 4th, 2025
Days on Market	1
Zoning	Zone 30
Condo Fee	\$205

DATA IS DEEMED RELIABLE BUT IS NOT GUARANTEED ACCURATE BY THE REALTORS® ASSOCIATION OF EDMONTON. COPYRIGHT 2025 BY THE REALTORS® ASSOCIATION OF EDMONTON. ALL RIGHTS RESERVED. Trademarks are owned or controlled by the Canadian Real Estate Association (CREA) and identify real estate professionals who are members of CREA (REALTOR®, REALTORS®) and/or the quality of services they provide (MLS®, Multiple Listing Service®)

Listing information last updated on April 5th, 2025 at 4:17am MDT