

Courtesy Of Kathleen Dacruz Of Century 21 Masters

\$1,154,000 - 53 26107 Twp Road 532 A, Rural Parkland County

MLS® #E4428223

\$1,154,000

4 Bedroom, 3.00 Bathroom, 1,884 sqft

Rural on 0.51 Acres

Park Lane Estates (Parkland), Rural Parkland County, AB

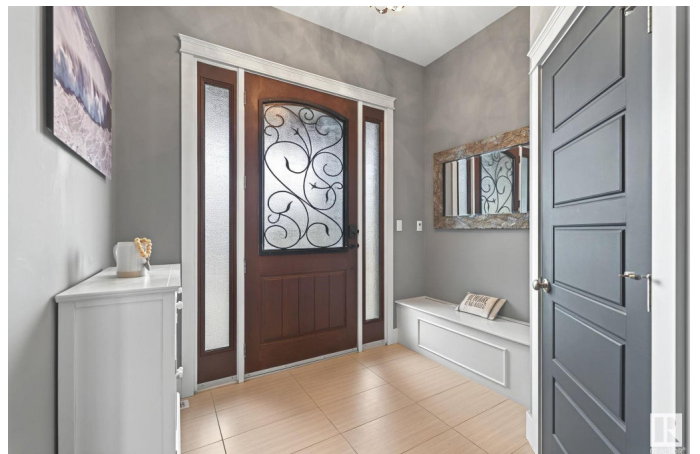
This fully landscaped executive acreage offers exceptional attention to detail. With just over 3,600 sq. ft., enjoy 14-ft coffered ceilings and 10-ft ceilings throughout the main floor. The main level features a primary bedroom with ensuite a 2nd bedroom, and a den, while the kitchen showcases custom cabinetry and granite countertops. A large gas fireplace and triple-pane windows add to the luxury, and floor-to-ceiling windows bring in natural light, enhancing the open feel of the space. Slate stone accents, custom bamboo floors, heated bathroom floors, and a built-in sound system complete the home. The walkout basement offers 2 additional bedrooms, an open concept, and a custom wet bar. The heated triple-car garage has epoxy floors, a floor drain, and ample space for your vehicles. The property is fully fenced, with a dog run, includes irrigation, and features a multi-tiered, no-maintenance composite deck with a custom stone fireplace. City water and sewer. This luxury home backs onto serene green space.

Built in 2012

Essential Information

MLS® #

E4428223



Price	\$1,154,000
Bedrooms	4
Bathrooms	3.00
Full Baths	3
Square Footage	1,884
Acres	0.51
Year Built	2012
Type	Rural
Sub-Type	Detached Single Family
Style	Bungalow
Status	Active

Community Information

Address	53 26107 Twp Road 532 A
Area	Rural Parkland County
Subdivision	Park Lane Estates (Parkland)
City	Rural Parkland County
County	ALBERTA
Province	AB
Postal Code	T7Y 1A1

Amenities

Features	Air Conditioner, Bar, Ceiling 10 ft., Ceiling 9 ft., Deck, Dog Run-Fenced In, Fire Pit, No Smoking Home, Parking-Extra, Patio, Sprinkler System-Fire, Vaulted Ceiling, Walkout Basement, Wet Bar
Parking Spaces	8

Interior

Interior Features	ensuite bathroom
Heating	Forced Air-1, Natural Gas
Fireplace	Yes
Stories	2
Has Basement	Yes
Basement	Full, Finished

Exterior

Exterior	Wood
Exterior Features	Fenced, Flat Site, Fruit Trees/Shrubs, Golf Nearby, Landscaped, Level Land, No Back Lane, No Through Road

Construction Wood
Foundation Concrete Perimeter

Additional Information

Date Listed March 30th, 2025
Days on Market 5
Zoning Zone 70

DATA IS DEEMED RELIABLE BUT IS NOT GUARANTEED ACCURATE BY THE REALTORS® ASSOCIATION OF EDMONTON. COPYRIGHT 2025 BY THE REALTORS® ASSOCIATION OF EDMONTON. ALL RIGHTS RESERVED. Trademarks are owned or controlled by the Canadian Real Estate Association (CREA) and identify real estate professionals who are members of CREA (REALTOR®, REALTORS®) and/or the quality of services they provide (MLS®, Multiple Listing Service®)

Listing information last updated on April 4th, 2025 at 4:17am MDT