

Courtesy Of Mike Najari Of RE/MAX Elite

\$219,000 - 2031 Saddleback Road, Edmonton

MLS® #E4428138

\$219,000

3 Bedroom, 1.00 Bathroom, 1,119 sqft
Condo / Townhouse on 0.00 Acres

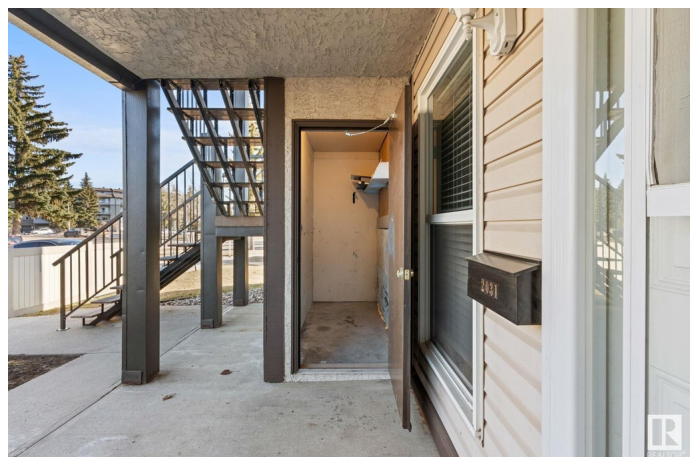
Skyrattler, Edmonton, AB

Welcome to this beautifully maintained end-unit in the desirable southwest community of Skyrattler. Just a short walk to Century Park LRT, enjoy quick access to UofA, downtown, and Southgate Mall. Professionally managed with low condo fees, this bright main-floor unit features three large bedrooms with walk-in closets, a spacious living room, a generous dining area, and a private patio and cozy fireplace. The kitchen offers oak cabinetry, a glass-top stove, a dishwasher, and a walk-in pantry. Ample storage includes a crawl space the size of the unit and secure outdoor storage. Steps from schools, grocery stores, recreation centers, and scenic trails along Blackmud Creek, this home offers the perfect mix of convenience and nature.

Built in 1978

Essential Information

MLS® #	E4428138
Price	\$219,000
Bedrooms	3
Bathrooms	1.00
Full Baths	1
Square Footage	1,119
Acres	0.00
Year Built	1978



Type	Condo / Townhouse
Sub-Type	Carriage
Style	Bungalow
Status	Active

Community Information

Address	2031 Saddleback Road
Area	Edmonton
Subdivision	Skyrattler
City	Edmonton
County	ALBERTA
Province	AB
Postal Code	T6J 4T4

Amenities

Amenities	See Remarks
Parking	See Remarks

Interior

Appliances	Dishwasher-Built-In, Dryer, Refrigerator, Stove-Electric, Washer
Heating	Forced Air-1, Natural Gas
Stories	1
Has Basement	Yes
Basement	None, No Basement

Exterior

Exterior	Wood, Vinyl
Exterior Features	Commercial, Landscaped, Park/Reserve, Public Swimming Pool, Public Transportation, Schools, Shopping Nearby
Roof	Asphalt Shingles
Construction	Wood, Vinyl
Foundation	Concrete Perimeter

Additional Information

Date Listed	March 28th, 2025
Days on Market	6
Zoning	Zone 16
Condo Fee	\$383

DATA IS DEEMED RELIABLE BUT IS NOT GUARANTEED ACCURATE BY THE REALTORS® ASSOCIATION OF

EDMONTON. COPYRIGHT 2025 BY THE REALTORS® ASSOCIATION OF EDMONTON. ALL RIGHTS RESERVED. Trademarks are owned or controlled by the Canadian Real Estate Association (CREA) and identify real estate professionals who are members of CREA (REALTOR®, REALTORS®) and/or the quality of services they provide (MLS®, Multiple Listing Service®)

Listing information last updated on April 3rd, 2025 at 2:47pm MDT