

Courtesy Of Barrie Tanner Of Terra Realty

# \$1,499,000 - 52257 Rge Rd 231, Rural Strathcona County

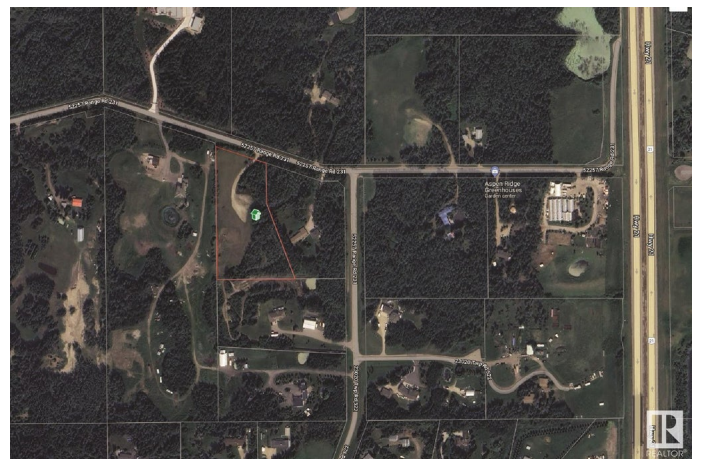
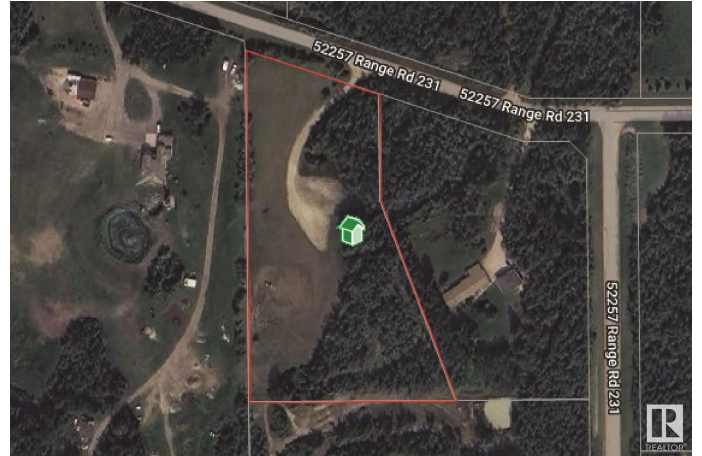
MLS® #E4428069

**\$1,499,000**

0 Bedroom, 0.00 Bathroom,  
Rural on 4.42 Acres

Sconadale, Rural Strathcona County, AB

Discover a pristine 4.42-acre canvas just moments south of Sherwood Park! This exceptional parcel invites your creative vision, whether crafting a new residence or exploring subdivision potential. Benefit from excellent site drainage and a prime location just minutes from all the conveniences of town. Enveloped by lush mature trees and scenic walking trails, this lot promises privacy and serenity. Embrace a countryside ambiance with swift access to Sherwood Park within this paved subdivision.

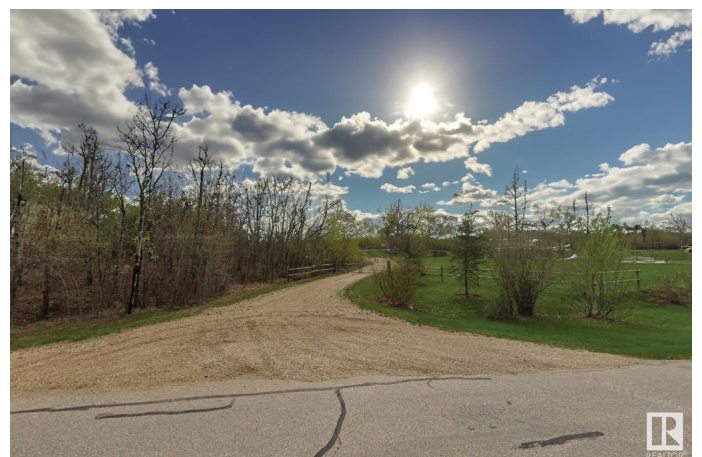


## Essential Information

MLS® #	E4428069
Price	\$1,499,000
Bathrooms	0.00
Acres	4.42
Type	Rural
Sub-Type	Vacant Lot/Land
Status	Active

## Community Information

Address	52257 Rge Rd 231
Area	Rural Strathcona County
Subdivision	Sconadale



City	Rural Strathcona County
County	ALBERTA
Province	AB
Postal Code	T8B 1A7

### **Exterior**

Exterior Features No Back Lane, No Through Road

### **Additional Information**

Date Listed March 28th, 2025

Days on Market 6

Zoning Zone 80

DATA IS DEEMED RELIABLE BUT IS NOT GUARANTEED ACCURATE BY THE REALTORS® ASSOCIATION OF EDMONTON. COPYRIGHT 2025 BY THE REALTORS® ASSOCIATION OF EDMONTON. ALL RIGHTS RESERVED. Trademarks are owned or controlled by the Canadian Real Estate Association (CREA) and identify real estate professionals who are members of CREA (REALTOR®, REALTORS®) and/or the quality of services they provide (MLS®, Multiple Listing Service®)

Listing information last updated on April 3rd, 2025 at 4:17pm MDT