

Courtesy Of Dylan L Kelley Of RE/MAX Real Estate

# \$3,725,000 - W. Side Of 224 Half-mile South Of Yellowhead, Sherwood Park

MLS® #E4427420

**\$3,725,000**

0 Bedroom, 0.00 Bathroom,  
Land Commercial on 0.00 Acres

None, Sherwood Park, AB

- Near New areas of Cambrian and Bremner will reshape this area with massive potential for this site!! - Trunk Lines for Sanitary & Water are Nearby ! - 4 Miles East of Sherwood Park !
- Great for Business/Industrial Site !

## Essential Information

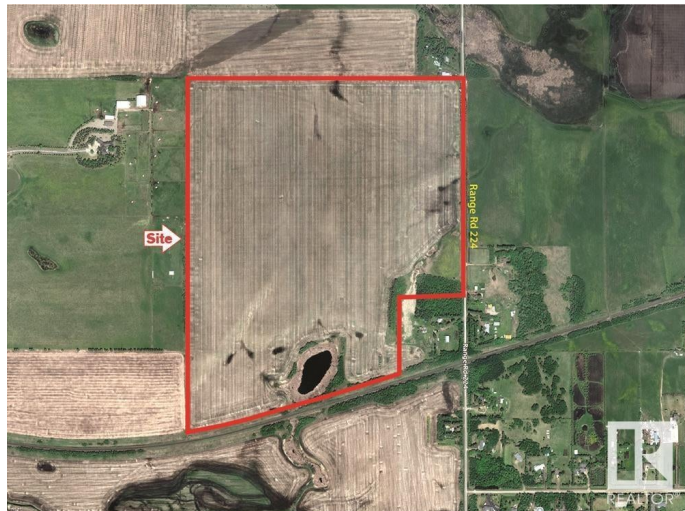
MLS® #	E4427420
Price	\$3,725,000
Bathrooms	0.00
Acres	0.00
Type	Land Commercial
Status	Active

## Community Information

Address	W. Side Of 224 Half-mile South
Area	Sherwood Park
Subdivision	None
City	Sherwood Park
County	ALBERTA
Province	AB
Postal Code	T8E 2K4

## Additional Information

Date Listed	March 24th, 2025
Days on Market	29



## Zoning

## Zone 25

DATA IS DEEMED RELIABLE BUT IS NOT GUARANTEED ACCURATE BY THE REALTORS® ASSOCIATION OF EDMONTON. COPYRIGHT 2025 BY THE REALTORS® ASSOCIATION OF EDMONTON. ALL RIGHTS RESERVED. Trademarks are owned or controlled by the Canadian Real Estate Association (CREA) and identify real estate professionals who are members of CREA (REALTOR®, REALTORS®) and/or the quality of services they provide (MLS®, Multiple Listing Service®)

Listing information last updated on April 22nd, 2025 at 2:17am MDT