

Courtesy Of Peter F Estephan Of RE/MAX Elite

\$749,900 - 458 Olsen Close, Edmonton

MLS® #E4427328

\$749,900

4 Bedroom, 3.50 Bathroom, 2,180 sqft
Single Family on 0.00 Acres

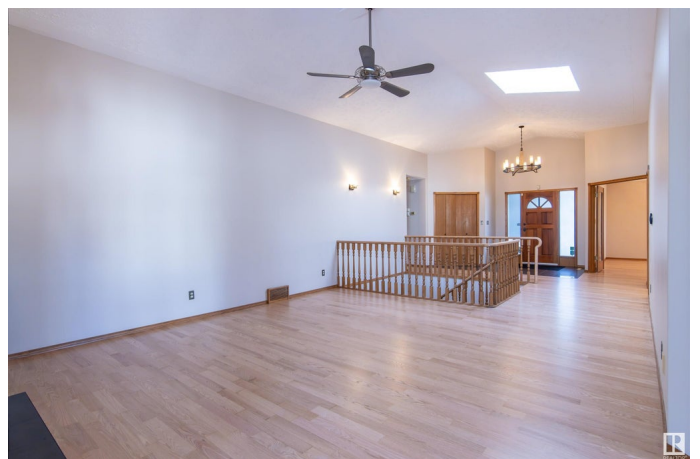
Ogilvie Ridge, Edmonton, AB

UNIQUE WALK-OUT BUNGALOW! Located on a quiet cul-de-sac in the highly desirable, Whitemud Ravine community of Ogilvie Ridge. Featuring a wealth of upgrades, high-end finishings, new sanded & stained main floor hardwood and freshly painted interior & exterior, " this home is **STUNNING!** The living room has a high vaulted ceiling, gas fireplace & opens to the spacious chef's kitchen with rich cabinetry, built-in appliances, island, granite counters & breakfast nook opening to the deck with **RAVINE VIEWS!** The main level is completed with a formal dining room, elegant French doors, den, laundry & luxury primary bedroom with w/i closet & spa like ensuite. The **WALK-OUT** lower level (new floor in family room & 1 bedroom) has 3 bedrooms, 2 with personal ensuites & a large family room, fireplace & access to the covered patio. The home has been **PRE-INSPECTED!** The prime location is unbeatable, just steps away from the ravine, walking trails & close to major shopping & great schools " a rare opportunity!!

Built in 1986

Essential Information

MLS® #	E4427328
Price	\$749,900



Bedrooms	4
Bathrooms	3.50
Full Baths	3
Half Baths	1
Square Footage	2,180
Acres	0.00
Year Built	1986
Type	Single Family
Sub-Type	Detached Single Family
Style	Bungalow
Status	Active

Community Information

Address	458 Olsen Close
Area	Edmonton
Subdivision	Ogilvie Ridge
City	Edmonton
County	ALBERTA
Province	AB
Postal Code	T6R 1L1

Amenities

Amenities	Ceiling 10 ft., Closet Organizers, Detectors Smoke, Exterior Walls-2"x6", Vaulted Ceiling, Walkout Basement
Parking Spaces	4
Parking	Double Garage Attached, Insulated

Interior

Interior Features	ensuite bathroom
Appliances	Compactor, Dishwasher-Built-In, Dryer, Garage Control, Garage Opener, Hood Fan, Oven-Built-In, Refrigerator, Stove-Countertop Gas, Vacuum System Attachments, Vacuum Systems, Washer
Heating	Forced Air-2, Natural Gas
Fireplace	Yes
Fireplaces	Glass Door, Mantel
Stories	2
Has Basement	Yes
Basement	Full, Finished

Exterior

Exterior	Wood
Exterior Features	Airport Nearby, Cul-De-Sac, Fenced, Golf Nearby, Landscaped, No Through Road, Public Swimming Pool, Public Transportation, Schools, Shopping Nearby, Ski Hill Nearby
Roof	Cedar Shakes
Construction	Wood
Foundation	Concrete Perimeter

Additional Information

Date Listed	March 25th, 2025
Days on Market	9
Zoning	Zone 14
HOA Fees	315
HOA Fees Freq.	Annually

DATA IS DEEMED RELIABLE BUT IS NOT GUARANTEED ACCURATE BY THE REALTORS® ASSOCIATION OF EDMONTON. COPYRIGHT 2025 BY THE REALTORS® ASSOCIATION OF EDMONTON. ALL RIGHTS RESERVED. Trademarks are owned or controlled by the Canadian Real Estate Association (CREA) and identify real estate professionals who are members of CREA (REALTOR®, REALTORS®) and/or the quality of services they provide (MLS®, Multiple Listing Service®)

Listing information last updated on April 3rd, 2025 at 2:32pm MDT