

\$888,800 - 634 Cheriton Crescent, Edmonton

MLS® #E4426693

\$888,800

4 Bedroom, 3.50 Bathroom, 2,752 sqft

Single Family on 0.00 Acres

Carter Crest, Edmonton, AB

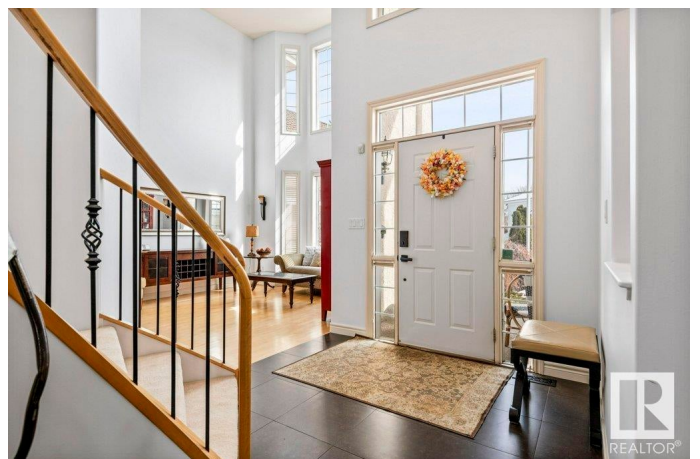
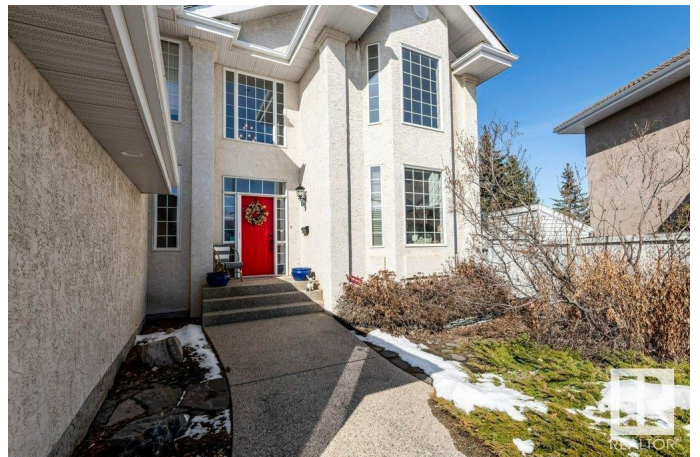
Custom Built GABLE HOMES Masterpiece on an Incredibly PRIVATE PIE Shaped Lot backing the park in Carter Crest! Elegant and Airy throughout, this home features over 4000 SQFT in total with 9FT Ceilings on the Main and Lower Level. Main Floor Hosting TWO Living Spaces - BOTH with Impressive 2 Storey Ceilings - Main Floor Den, Large Mudroom, Spacious Kitchen with Adjoining Laundry Room - Could be converted to a BUTLER PANTRY or SPICE KITCHEN. Upper Level with MASSIVE Primary RETREAT overlooking the park, HUGE Walk-In Closet, and Enormous Ensuite. Generous Secondary Bedrooms and Family Bathroom. Fully Finished Basement with Wet Bar, Entertaining Spaces, Bedroom, Bathroom and Storage. Upgrades included: Air Conditioned, 2 Furnaces (2020), 2 HWT (1 - 2020), Irrigation System. Garage Dimensions: 19'10 x 20'10. All this located on in Private Cul-de-Sac location close to Top Schools, Parks, and great access to anywhere in Edmonton - the very BEST that Riverbend has to offer!!

Built in 1997

Essential Information

MLS® # E4426693

Price \$888,800



Bedrooms	4
Bathrooms	3.50
Full Baths	3
Half Baths	1
Square Footage	2,752
Acres	0.00
Year Built	1997
Type	Single Family
Sub-Type	Detached Single Family
Style	2 Storey
Status	Active

Community Information

Address	634 Cheriton Crescent
Area	Edmonton
Subdivision	Carter Crest
City	Edmonton
County	ALBERTA
Province	AB
Postal Code	T6R 2M5

Amenities

Amenities	Air Conditioner, Bar, Ceiling 9 ft., Deck, No Smoking Home
Parking Spaces	4
Parking	Double Garage Attached

Interior

Interior Features	ensuite bathroom
Appliances	Air Conditioning-Central, Dishwasher-Built-In, Dryer, Freezer, Refrigerator, Washer, Wet Bar
Heating	Forced Air-2, Natural Gas
Fireplace	Yes
Fireplaces	Insert, Tile Surround
Stories	3
Has Basement	Yes
Basement	Full, Finished

Exterior

Exterior	Wood, Stucco
----------	--------------

Exterior Features	Backs Onto Park/Trees, Cul-De-Sac, Fenced, Schools, Shopping Nearby
Roof	Cedar Shakes
Construction	Wood, Stucco
Foundation	Concrete Perimeter

School Information

Elementary	GEORGE H LUCK
Middle	RIVERBEND
High	LILLIAN OSBORNE

Additional Information

Date Listed	March 20th, 2025
Days on Market	13
Zoning	Zone 14
HOA Fees	216.58
HOA Fees Freq.	Annually

DATA IS DEEMED RELIABLE BUT IS NOT GUARANTEED ACCURATE BY THE REALTORS® ASSOCIATION OF EDMONTON. COPYRIGHT 2025 BY THE REALTORS® ASSOCIATION OF EDMONTON. ALL RIGHTS RESERVED. Trademarks are owned or controlled by the Canadian Real Estate Association (CREA) and identify real estate professionals who are members of CREA (REALTOR®, REALTORS®) and/or the quality of services they provide (MLS®, Multiple Listing Service®)

Listing information last updated on April 2nd, 2025 at 8:47pm MDT