

Courtesy Of Jason A Thomas Of Royal LePage Summit Realty

# \$32,999 - 53222 Range Road 272, Rural Parkland County

MLS® #E4426512

**\$32,999**

3 Bedroom, 1.00 Bathroom, 942 sqft  
Land Lease Community on 0.00 Acres

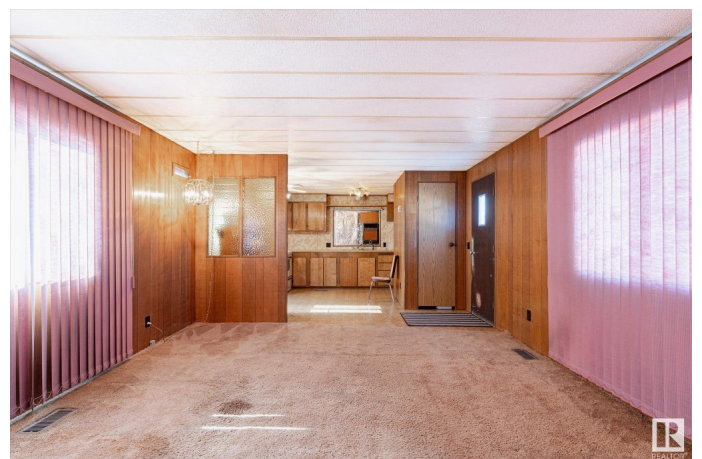
Parkland Village, Rural Parkland County, AB

Bring your personal decorating touch to this home. This home needs some work but it is an affordable way to get into the market and own your own home! Property is an estate sale, and is sold "as is where is". This 3 bedroom unit has some upgrades including an asphalt pitched roof and newer washer and dryer. Hot water tank is currently not installed, but new hot water tank in box in the unit will stay. Yard is large with a shed that stays and there is a two car parking pad. Very well maintained community including amenities such as a K-6 school, playgrounds, a store, restaurant, its own fire station, gas bar, and a man-made lake. Park approval is required for new residents. Lot rent is \$740 per month and includes water.

Built in 1981

## Essential Information

MLS® #	E4426512
Price	\$32,999
Bedrooms	3
Bathrooms	1.00
Full Baths	1
Square Footage	942
Acres	0.00



Year Built	1981
Type	Land Lease Community
Sub-Type	Detached Single Family
Style	Bungalow
Status	Active

### **Community Information**

Address	53222 Range Road 272
Area	Rural Parkland County
Subdivision	Parkland Village
City	Rural Parkland County
County	ALBERTA
Province	AB
Postal Code	T7X 3N4

### **Amenities**

Parking Spaces	2
Parking	2 Outdoor Stalls

### **Interior**

Appliances	Air Conditioner-Window, Dryer, Refrigerator, Stove-Electric, Washer
Heating	Forced Air-1, Natural Gas

### **Exterior**

Foundation	See Remarks
------------	-------------

### **Additional Information**

Date Listed	March 19th, 2025
Days on Market	23
Zoning	Zone 70

DATA IS DEEMED RELIABLE BUT IS NOT GUARANTEED ACCURATE BY THE REALTORS® ASSOCIATION OF EDMONTON. COPYRIGHT 2025 BY THE REALTORS® ASSOCIATION OF EDMONTON. ALL RIGHTS RESERVED. Trademarks are owned or controlled by the Canadian Real Estate Association (CREA) and identify real estate professionals who are members of CREA (REALTOR®, REALTORS®) and/or the quality of services they provide (MLS®, Multiple Listing Service®)

Listing information last updated on April 11th, 2025 at 12:32pm MDT