

\$588,800 - 6627 Crawford Ld, Edmonton

MLS® #E4426262

\$588,800

3 Bedroom, 2.50 Bathroom, 1,829 sqft

Single Family on 0.00 Acres

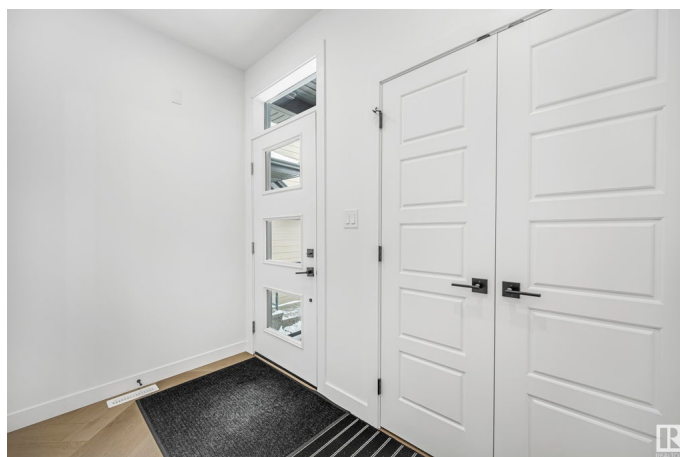
Chappelle Area, Edmonton, AB

Nestled in the sought-after Chappelle community, tour this beautiful 3-bedroom home with a bonus room by Klair Custom Homes. This 1700+ sq ft home features a beautifully landscaped, extended yard that is half-fenced with a cedar deck and glass railing. High-quality finishes include Hardie siding, an aggregate driveway, quartz countertops, undermount sinks, framed mirrors, soft-close cabinetry, pot lights, California knockdown ceilings, custom drywall corners, and NO CARPET! The kitchen boasts a gas range with stainless steel appliances. Explore an open-concept main floor featuring a custom electric fireplace and A/C throughout, ensuring year-round comfort. The upper level includes the master suite, a bonus room, laundry room, and two additional bedrooms; each with walk-in closets. Conveniently located near a nature reserve, pond, and path system, this home checks all of your boxes!

Built in 2023

Essential Information

MLS® #	E4426262
Price	\$588,800
Bedrooms	3
Bathrooms	2.50
Full Baths	2



Half Baths	1
Square Footage	1,829
Acres	0.00
Year Built	2023
Type	Single Family
Sub-Type	Half Duplex
Style	2 Storey
Status	Active

Community Information

Address	6627 Crawford Ld
Area	Edmonton
Subdivision	Chappelle Area
City	Edmonton
County	ALBERTA
Province	AB
Postal Code	T6W 4L5

Amenities

Amenities	Closet Organizers, Deck, Exterior Walls- 2"x6", Hot Water Natural Gas, No Smoking Home, Smart/Program. Thermostat, Vinyl Windows, Vacuum System-Roughed-In, HRV System, Natural Gas BBQ Hookup, Natural Gas Stove Hookup
Parking	Double Garage Attached

Interior

Interior Features	ensuite bathroom
Appliances	Air Conditioning-Central, Dishwasher-Built-In, Dryer, Freezer, Garage Control, Garage Opener, Hood Fan, Oven-Microwave, Refrigerator, Stove-Gas, Washer
Heating	Forced Air-1, Natural Gas
Fireplace	Yes
Fireplaces	Direct Vent
Stories	2
Has Basement	Yes
Basement	Full, Unfinished

Exterior

Exterior	Wood, Stone, Hardie Board Siding
Exterior Features	Airport Nearby, Environmental Reserve, Golf Nearby, Landscaped, No

Back Lane, Park/Reserve, Playground Nearby, Public Transportation,
Schools, Shopping Nearby, Partially Fenced

Roof	Asphalt Shingles
Construction	Wood, Stone, Hardie Board Siding
Foundation	Concrete Perimeter

Additional Information

Date Listed	March 18th, 2025
Days on Market	31
Zoning	Zone 55

DATA IS DEEMED RELIABLE BUT IS NOT GUARANTEED ACCURATE BY THE REALTORS® ASSOCIATION OF EDMONTON. COPYRIGHT 2025 BY THE REALTORS® ASSOCIATION OF EDMONTON. ALL RIGHTS RESERVED. Trademarks are owned or controlled by the Canadian Real Estate Association (CREA) and identify real estate professionals who are members of CREA (REALTOR®, REALTORS®) and/or the quality of services they provide (MLS®, Multiple Listing Service®)

Listing information last updated on April 18th, 2025 at 2:02pm MDT