

## \$589,000 - 2155 51 St, Edmonton

MLS® #E4425323

**\$589,000**

4 Bedroom, 3.00 Bathroom, 1,932 sqft  
Single Family on 0.00 Acres

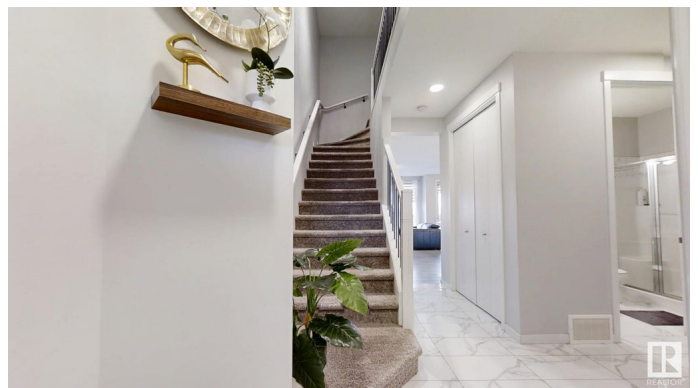
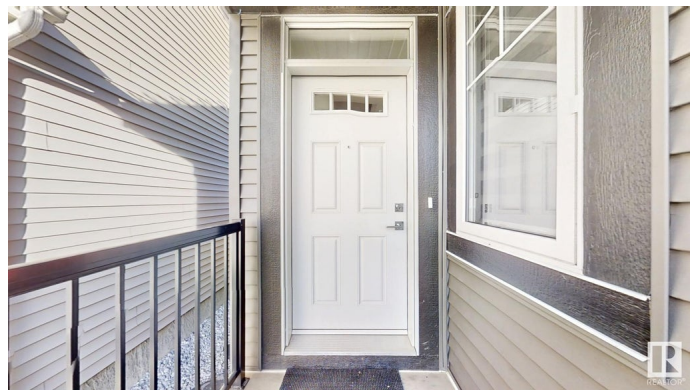
Walker, Edmonton, AB

This beautifully designed detached home offers a well-planned living space, perfect for families. The main floor features a bedroom and full bathroom, ideal for elderly family members. It also includes a modern kitchen with built-in KitchenAid appliances, a butler's pantry, a spacious living and dining area, a cozy fireplace, a laundry room, and a pantry for added convenience. The second floor boasts a spacious family room, a primary suite with a walk-in closet and full ensuite, and two additional generously sized bedrooms—each with its own walk-in closet—along with another full bath. This home is designed for efficiency & comfort, featuring extended driveways, oversized windows, air conditioning, a composite deck, a 600 CFM exhaust fan, a king-size washer and dryer, and tall doors with 9' ceilings. The large backyard offers great outdoor space, with security cameras. A separate basement entrance can be easily built, offering future flexibility. With big bedrooms, modern finishes, and thoughtful upgrades.

Built in 2019

### Essential Information

MLS® #	E4425323
Price	\$589,000



Bedrooms	4
Bathrooms	3.00
Full Baths	3
Square Footage	1,932
Acres	0.00
Year Built	2019
Type	Single Family
Sub-Type	Detached Single Family
Style	2 Storey
Status	Active

### **Community Information**

Address	2155 51 St
Area	Edmonton
Subdivision	Walker
City	Edmonton
County	ALBERTA
Province	AB
Postal Code	T6X 2W1

### **Amenities**

Amenities	Air Conditioner, Ceiling 9 ft., Deck
Parking	Double Garage Attached

### **Interior**

Interior Features	ensuite bathroom
Appliances	Dishwasher-Built-In, Dryer, Oven-Microwave, Refrigerator, Washer, Window Coverings
Heating	Forced Air-1, Natural Gas
Fireplace	Yes
Fireplaces	Glass Door
Stories	2
Has Basement	Yes
Basement	Full, Unfinished

### **Exterior**

Exterior	Wood, Stone, Vinyl
Exterior Features	Playground Nearby, Public Transportation, Schools, Shopping Nearby
Roof	Asphalt Shingles

Construction	Wood, Stone, Vinyl
Foundation	Concrete Perimeter

### **School Information**

Elementary	Shauna May Seneca School
Middle	Riverbend School
High	J Percy Page School

### **Additional Information**

Date Listed	March 12th, 2025
Days on Market	23
Zoning	Zone 53

DATA IS DEEMED RELIABLE BUT IS NOT GUARANTEED ACCURATE BY THE REALTORS® ASSOCIATION OF EDMONTON. COPYRIGHT 2025 BY THE REALTORS® ASSOCIATION OF EDMONTON. ALL RIGHTS RESERVED. Trademarks are owned or controlled by the Canadian Real Estate Association (CREA) and identify real estate professionals who are members of CREA (REALTOR®, REALTORS®) and/or the quality of services they provide (MLS®, Multiple Listing Service®)

Listing information last updated on April 4th, 2025 at 7:47pm MDT