

\$355,000 - 2534 Rabbit Hill Road, Edmonton

MLS® #E4424498

\$355,000

3 Bedroom, 2.50 Bathroom, 1,478 sqft
Condo / Townhouse on 0.00 Acres

Leger, Edmonton, AB

Well maintained 1344 sq ft. 2 Story, Half duplex, Bare land Condominium in the Renaissance of Whitemud Oaks; in the desirable community of Leger south Edmonton. Beautiful open concept living and dining area; Gas fireplace, walk-in pantry with lots of sunshine coming in through the large window and patio doors, leading to a large deck to enjoy your morning coffee or evening BBQ. Upstairs you will find 3 good size bedrooms, Walk-in closet, 4 pc Ensuite and convenient 2nd floor laundry. Attached garage, gazebo in the courtyard. Close to the Terwillegar Recreation Centre, shopping, schools dining and many amenities, easy access to Henday.

Built in 2001

Essential Information

| | |
|----------------|-----------|
| MLS® # | E4424498 |
| Price | \$355,000 |
| Bedrooms | 3 |
| Bathrooms | 2.50 |
| Full Baths | 2 |
| Half Baths | 1 |
| Square Footage | 1,478 |
| Acres | 0.00 |
| Year Built | 2001 |



Type Condo / Townhouse
Sub-Type Half Duplex
Style 2 Storey
Status Active

Community Information

Address 2534 Rabbit Hill Road
Area Edmonton
Subdivision Leger
City Edmonton
County ALBERTA
Province AB
Postal Code T6R 2Y9

Amenities

Amenities Deck, Detectors Smoke, No S
Parking Front Drive Access, Insulated

Interior

Interior Features ensuite bathroom
Appliances Dryer, Garage Opener, Hood
Heating Forced Air-1, Natural Gas
Fireplace Yes
Fireplaces Mantel, Marble Surround
Stories 2
Has Basement Yes
Basement Full, Unfinished

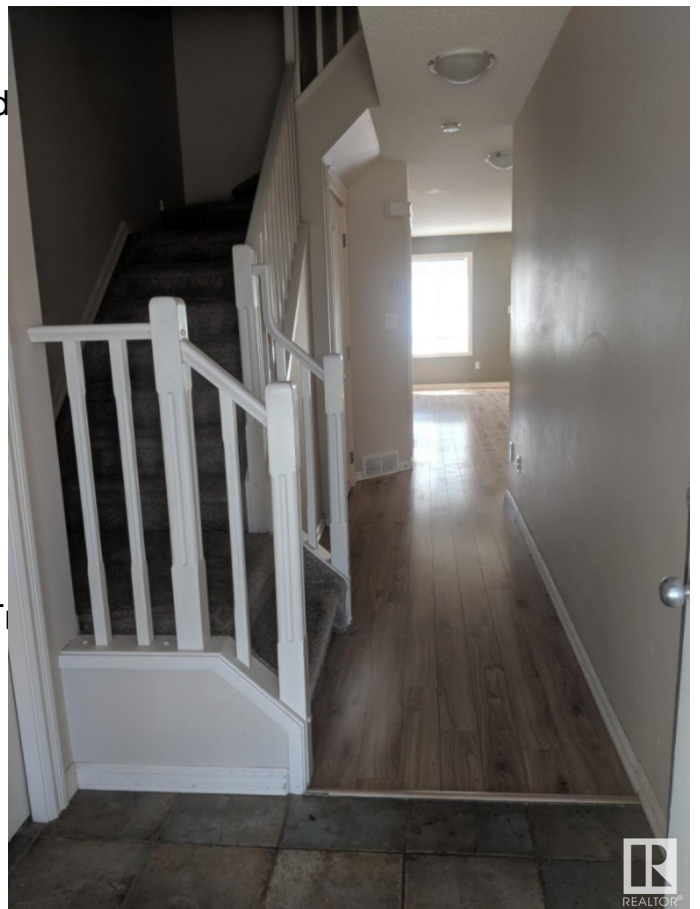
Exterior

Exterior Wood, Brick, Vinyl
Exterior Features Playground Nearby, Public T
Roof Asphalt Shingles
Construction Wood, Brick, Vinyl
Foundation Concrete Perimeter

School Information

Elementary Nellie Carson
High Lillian Osborne HS

Additional Information



| | |
|----------------|-----------------|
| Date Listed | March 7th, 2025 |
| Days on Market | 28 |
| Zoning | Zone 14 |
| Condo Fee | \$374 |

DATA IS DEEMED RELIABLE BUT IS NOT GUARANTEED ACCURATE BY THE REALTORS® ASSOCIATION OF EDMONTON. COPYRIGHT 2025 BY THE REALTORS® ASSOCIATION OF EDMONTON. ALL RIGHTS RESERVED. Trademarks are owned or controlled by the Canadian Real Estate Association (CREA) and identify real estate professionals who are members of CREA (REALTOR®, REALTORS®) and/or the quality of services they provide (MLS®, Multiple Listing Service®)

Listing information last updated on April 4th, 2025 at 8:47am MDT