

\$924,900 - 44 26409 Twp Road 532 A, Rural Parkland County

MLS® #E4423197

\$924,900

3 Bedroom, 3.50 Bathroom, 1,781 sqft
Rural on 0.99 Acres

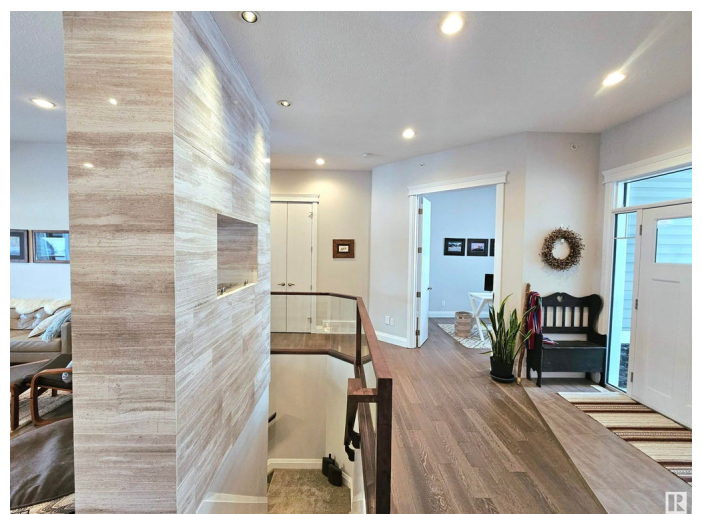
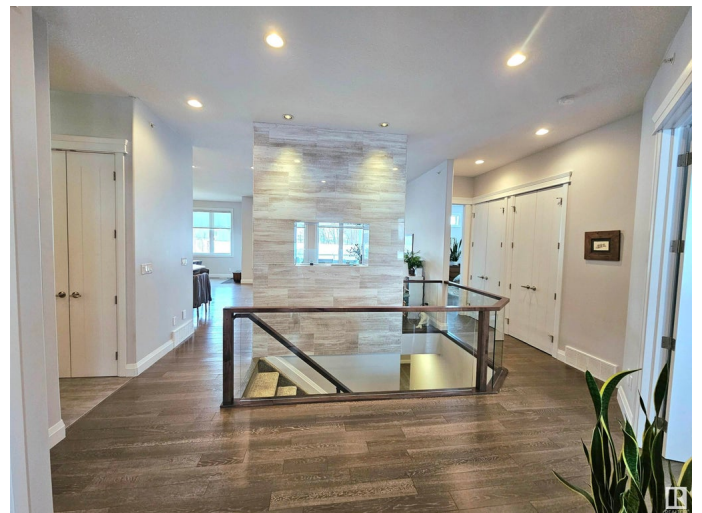
Spring Meadow Estates, Rural Parkland County, AB

Welcome home to this stunning custom-built bungalow on 1 acre with no backing neighbors. This home features 3384 sq. ft. total of fully finished living space. Upstairs you are greeted to a grand foyer, elegant finishes, open-floor plan and tons of natural light. The kitchen boasts a large island, high-end stainless-steel appliances, double undermount sink, large walk-through pantry, and quartz counter tops. On the lower level you are met with a wet bar, fully finished family room, and gas fireplace. The basement is roughed in for in floor heat. The attached heated triple garage features a floor drain and drive through bay. This thoughtfully designed home combines style, comfort, and functionality in a picturesque setting. Located minutes away from Edmonton Springs golf course, municipal utilities and to many upgrades to list, this home won't last long!

Built in 2014

Essential Information

MLS® #	E4423197
Price	\$924,900
Bedrooms	3
Bathrooms	3.50



Full Baths	3
Half Baths	1
Square Footage	1,781
Acres	0.99
Year Built	2014
Type	Rural
Sub-Type	Detached Single Family
Style	Bungalow
Status	Active

Community Information

Address	44 26409 Twp Road 532 A
Area	Rural Parkland County
Subdivision	Spring Meadow Estates
City	Rural Parkland County
County	ALBERTA
Province	AB
Postal Code	T7X 4M1

Amenities

Features	Air Conditioner, Bar, Closet Organizers, Deck, Front Porch, Hot Water Natural Gas, Insulation-Upgraded, R.V. Storage, Sprinkler System-Fire, Natural Gas BBQ Hookup, Natural Gas Stove Hookup
----------	---

Interior

Interior Features	ensuite bathroom
Heating	Forced Air-2, Natural Gas
Stories	2
Has Basement	Yes
Basement	Full, Finished

Exterior

Exterior	Concrete
Exterior Features	Backs Onto Park/Trees, Fenced, Flat Site, Golf Nearby, Landscaped
Construction	Concrete
Foundation	Concrete Perimeter

Additional Information

Date Listed	February 26th, 2025
-------------	---------------------

Days on Market 16

Zoning Zone 70

DATA IS DEEMED RELIABLE BUT IS NOT GUARANTEED ACCURATE BY THE REALTORS® ASSOCIATION OF EDMONTON. COPYRIGHT 2025 BY THE REALTORS® ASSOCIATION OF EDMONTON. ALL RIGHTS RESERVED. Trademarks are owned or controlled by the Canadian Real Estate Association (CREA) and identify real estate professionals who are members of CREA (REALTOR®, REALTORS®) and/or the quality of services they provide (MLS®, Multiple Listing Service®)

Listing information last updated on March 14th, 2025 at 7:17am MDT