

## **\$519,900 - 8911 Elves Loop, Edmonton**

MLS® #E4422111

### **\$519,900**

3 Bedroom, 2.50 Bathroom, 1,462 sqft  
Single Family on 0.00 Acres

Edgemont (Edmonton), Edmonton, AB

Welcome to the Emerson model built by Excel Homes 35 year builder in sought after EDGEMONT! On a quiet street, this beautiful UPGRADED half duplex with FRONT DOUBLE ATTACHED GARAGE awaits. Upon entering you are greeted with 9 FOOT MAIN FLOOR CEILING, LVP flooring, THICK 1.25" QUARTZ THROUGHOUT including kitchen countertops , stove-electric, refrigerator, dishwasher built-in & over the range microwave. The kitchen which has PENDANT LIGHTS, upgraded nook light fixture & opens to the living room. 1/2 bath completes the main floor. Upstairs is premium carpet, 3 bedrooms, including large primary with walk in closet, and 4 piece ensuite. Laundry and full main bath complete the upper level. SEPARATE ENTRANCE, BASEMENT CEILING HEIGHT 9 FT, ROUGH-IN READY for LEGAL SUITE. GREEN BUILT certified, includes tankless water system,HRV, insulated lines, upgraded insulation, eco bee thermostat, low E windows, solar panel rough-in and much more! REAR DECK & PREMIUM SIDING INCLUDED!  
Close to ALL amenities!

Built in 2025

### **Essential Information**

MLS® #	E4422111
Price	\$519,900



Bedrooms 3  
 Bathrooms 2.50  
 Full Baths 2  
 Half Baths 1  
 Square Footage 1,462  
 Acres 0.00  
 Year Built 2025  
 Type Single Family  
 Sub-Type Half Duplex  
 Style 2 Storey  
 Status Active

**Community Information**

Address 8911 Elves Loop  
 Area Edmonton  
 Subdivision Edgemont (Edmonton)  
 City Edmonton  
 County ALBERTA  
 Province AB  
 Postal Code T6M 3G2

**Amenities**

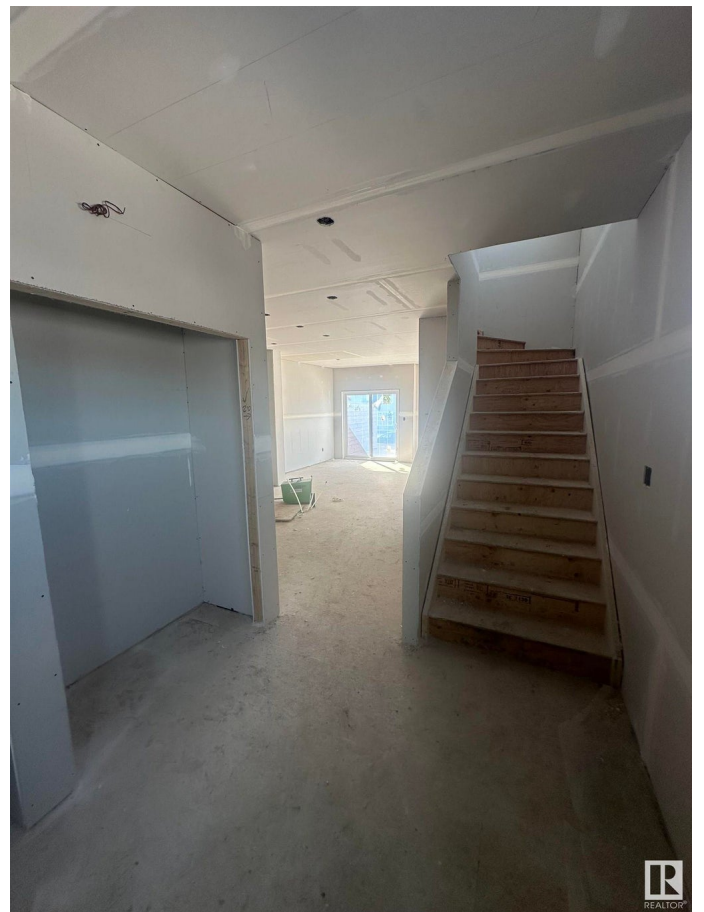
Amenities Ceiling 9 ft., Deck, De  
 Insulation-Upgraded, Smart/F  
 System, 9 ft. Basement Ceilin  
 Parking Double Garage Attached

**Interior**

Interior Features ensuite bathroom  
 Appliances Dishwasher-Built-In, Dryer, C  
 Hood Fan, Refrigerator, Stov  
 Heating Forced Air-1, Natural Gas  
 Stories 2  
 Has Basement Yes  
 Basement Full, Unfinished

**Exterior**

Exterior Wood, Stone, Vinyl  
 Exterior Features Flat Site, Partially Landscaped, Playground Nearby, Public



	Transportation, Schools
Roof	Asphalt Shingles
Construction	Wood, Stone, Vinyl
Foundation	Concrete Perimeter

### **Additional Information**

Date Listed	February 19th, 2025
Days on Market	55
Zoning	Zone 57

DATA IS DEEMED RELIABLE BUT IS NOT GUARANTEED ACCURATE BY THE REALTORS® ASSOCIATION OF EDMONTON. COPYRIGHT 2025 BY THE REALTORS® ASSOCIATION OF EDMONTON. ALL RIGHTS RESERVED. Trademarks are owned or controlled by the Canadian Real Estate Association (CREA) and identify real estate professionals who are members of CREA (REALTOR®, REALTORS®) and/or the quality of services they provide (MLS®, Multiple Listing Service®)

Listing information last updated on April 15th, 2025 at 6:17am MDT