

Courtesy Of Sharon M Josey Of RE/MAX River City

## **\$399,900 - 182 Lakewood Drive, Spruce Grove**

MLS® #E4422034

### **\$399,900**

3 Bedroom, 1.50 Bathroom, 1,234 sqft  
Single Family on 0.00 Acres

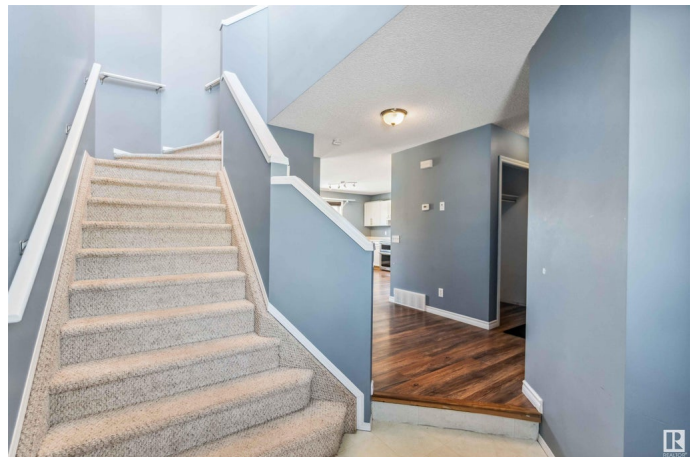
Lakewood\_SPGR, Spruce Grove, AB

Welcome home to this beautiful 1200 sq ft 2-storey in the desirable Lakewood community, featuring a fully finished basement! The bright, open-concept main floor boasts an inviting eat-in kitchen with ample counter space, a corner pantry, and plenty of storage. The sun-filled living room is perfect for relaxing or entertaining family and friends. Upstairs, you'll find a spacious primary bedroom, two additional generously sized bedrooms, and a 4-piece bath. The fully finished basement offers a large rec room, with the potential to easily add an extra bedroom or bathroom to suit your needs. The double attached garage and fully fenced backyard with a raised garden and cozy fire pit make this home complete. Recent updates include a newer hot water tank, shingles, and laminate flooring. Conveniently located near shopping, schools, parks, public transportation, and with easy access to the Yellowhead Highway this home is ready to welcome its new owners!

Built in 2003

### **Essential Information**

MLS® #	E4422034
Price	\$399,900
Bedrooms	3



Bathrooms	1.50
Full Baths	1
Half Baths	1
Square Footage	1,234
Acres	0.00
Year Built	2003
Type	Single Family
Sub-Type	Detached Single Family
Style	2 Storey
Status	Active

### **Community Information**

Address	182 Lakewood Drive
Area	Spruce Grove
Subdivision	Lakewood_SPGR
City	Spruce Grove
County	ALBERTA
Province	AB
Postal Code	T7X 4K3

### **Amenities**

Amenities	See Remarks
Parking	Double Garage Attached

### **Interior**

Appliances	Dishwasher-Built-In, Fan-Ceiling, Garage Control, Garage Opener, Hood Fan, Refrigerator, Stove-Electric, Window Coverings, Garage Heater
Heating	Forced Air-1, Natural Gas
Stories	3
Has Basement	Yes
Basement	Full, Finished

### **Exterior**

Exterior	Wood, Vinyl
Exterior Features	Airport Nearby, Fenced, Flat Site, Landscaped, Level Land, Playground Nearby, Public Transportation, Schools, Shopping Nearby
Roof	Asphalt Shingles
Construction	Wood, Vinyl
Foundation	Concrete Perimeter

## Additional Information

Date Listed February 19th, 2025

Days on Market 23

Zoning Zone 91



DATA IS DEEMED RELIABLE BUT IS NOT GUARANTEED ACCURATE BY THE REALTORS<sup>®</sup> ASSOCIATION OF EDMONTON. COPYRIGHT 2025 BY THE REALTORS<sup>®</sup> ASSOCIATION OF EDMONTON. ALL RIGHTS RESERVED. Trademarks are owned or controlled by the Canadian Real Estate Association (CREA) and identify real estate professionals who are members of CREA (REALTOR<sup>®</sup>, REALTORS<sup>®</sup>) and/or the quality of services they provide (MLS<sup>®</sup>, Multiple Listing Service<sup>®</sup>)

Listing information last updated on March 14th, 2025 at 7:02am MDT