

# \$125,000 - 202 5730 Riverbend Road, Edmonton

MLS® #E4421775

**\$125,000**

2 Bedroom, 1.00 Bathroom, 870 sqft  
Condo / Townhouse on 0.00 Acres

Brander Gardens, Edmonton, AB

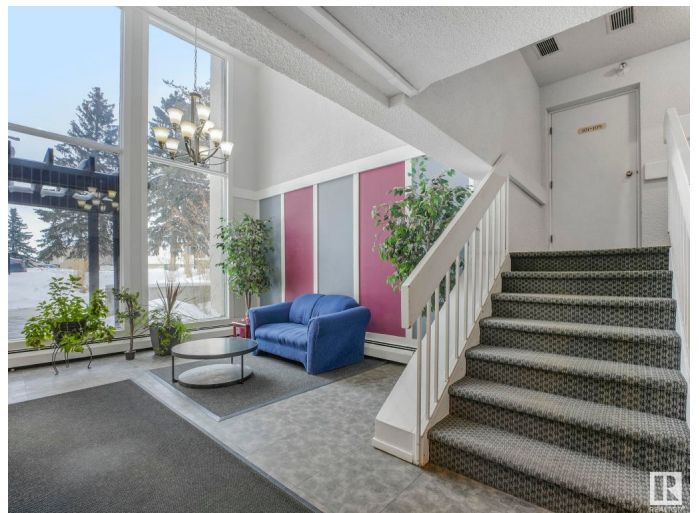
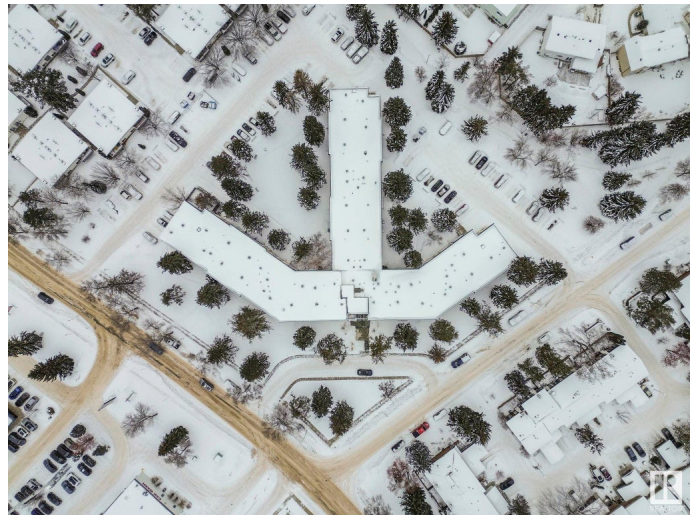
Great investment opportunity in an even better location! This spacious two bedroom unit offers a quick access to the Whitemud & Terwillegar Drive. This second floor unit is conveniently laid out with a large living room, kitchen and dining space on one end and the two bedrooms and full bath located on the other. This property comes with an assigned parking stall and plenty of visitor & street parking. Close to shopping, schools and other amenities. Take a look!

Built in 1973

## Essential Information

MLS® #	E4421775
Price	\$125,000
Bedrooms	2
Bathrooms	1.00
Full Baths	1
Square Footage	870
Acres	0.00
Year Built	1973
Type	Condo / Townhouse
Sub-Type	Lowrise Apartment
Style	Single Level Apartment
Status	Active

## Community Information



Address	202 5730 Riverbend Road
Area	Edmonton
Subdivision	Brander Gardens
City	Edmonton
County	ALBERTA
Province	AB
Postal Code	T6H 4T4

### **Amenities**

Amenities	Patio
Parking	Stall

### **Interior**

Appliances	Dishwasher-Built-In, Hood Fan, Refrigerator, Stove-Electric
Heating	Baseboard, Natural Gas
# of Stories	3
Stories	1
Has Basement	Yes
Basement	None, No Basement

### **Exterior**

Exterior	Wood, Stucco
Exterior Features	Playground Nearby, Public Transportation, Schools, Shopping Nearby
Roof	Flat
Construction	Wood, Stucco
Foundation	Concrete Perimeter

### **Additional Information**

Date Listed	February 15th, 2025
Days on Market	46
Zoning	Zone 14
Condo Fee	\$541

DATA IS DEEMED RELIABLE BUT IS NOT GUARANTEED ACCURATE BY THE REALTORS® ASSOCIATION OF EDMONTON. COPYRIGHT 2025 BY THE REALTORS® ASSOCIATION OF EDMONTON. ALL RIGHTS RESERVED. Trademarks are owned or controlled by the Canadian Real Estate Association (CREA) and identify real estate professionals who are members of CREA (REALTOR®, REALTORS®) and/or the quality of services they provide (MLS®, Multiple Listing Service®)

Listing information last updated on April 2nd, 2025 at 9:17pm MDT